

RC3 LONG NIGHT OF RESEARCH
1ST EDITION, 23 MARCH 2023

**Covid-19 and Volunteerism across the RCRC
Movement**



Dan Ferrand-Bechmann
Sociologist, Professor
Emeritus of the
University of Paris 8

Annabelle Jaccard
Clinical psychologist
and doctor in
psychopathology and
psychoanalysis

Hamed Seddighi
Postdoctoral Researcher,
Clinical Psychology and
Experimental
Psychopathology
Department, University of
Groningen

Khoudia Sow
Medical doctor and
anthropologist, Regional
Centre for Clinical
Management and
Training of the Infectious
Diseases, Fann Hospital
in Dakar

Moderated by Virginie Troit, *Director*
Vincent Leger, *Research Officer*

French Red Cross Foundation for Humanitarian and Social Research – Paris



Kind reminder:

During the session:

- Rename yourself: Full Name + Organization
- Mute your microphone
- Keep your video on. Switch off if low connectivity

If you have questions to the speakers:

- **Ideally:** Use the Q&A feature to ask your question
- **Second option:** Use the raise hand feature, the moderator will ask you to unmute yourself.

If you have IT questions:

- Ask your question in the chat, an administrator will help you.

Confidentiality statement and data protection

- Sessions will be recorded
- Participants commit not taking pictures of screen or of other participants without permission
- If slides are posted on the shared screen, the speaker should inform the participants if they will receive the slides.

RC3 LONG NIGHT OF RESEARCH
23 MARCH 2023

Covid-19 and Volunteerism across the RCRC Movement

Purpose:

- Little is known on volunteers' involvement in an epidemic response.
- Some studies have demonstrated the effectiveness of volunteer action in supporting epidemic response interventions.
- Others have highlighted the institutional, social and psychological factors that affect the well-being of those involved, as well as factors associated with resilience and post-event burnout.
- This roundtable invites scientists and practitioners to share reflections and research results on the benefits and challenges of volunteers' involvement in the Covid-19 epidemic response across the RCRC movement

“Social Science in time of emergency: how to adapt?”
Vincent Leger, French Red Cross Foundation



RC3 LONG NIGHT OF RESEARCH
23 MARCH 2023

Covid-19 and Volunteerism across the RCRC Movement

Programme:

- 1) Presentation of the French red cross Foundation's Covid-19 emergency research programme (15 mns)
- 2) Open discussion with the participants & the audience (60 mns)

“Social Science in time of emergency: how to adapt?”
Vincent Leger, French Red Cross Foundation



RC3 LONG NIGHT OF RESEARCH

23 MARCH 2023

Our engagement with research: creating new spaces bridging science and civil society organisations

The French Red Cross Foundation is a **recognised public utility foundation dedicated to research**, which aims to improve the practices in the fields of humanitarian and development action, in France and around the world, by supporting researchers and developing collaborative projects with academic institutions. To achieve its mission, the Foundation is guided by the values and principles of the International Red Cross and Red Crescent Movement and is based on the expertise and scientific methodologies that underpin its identity and guarantee its effectiveness.



An imperative: increased research in the field of social and humanitarian action



Inclusivity and diversity in research



One purpose: general interest and common goods



An approach : co-construction

Our core value: participating in the transformation of humanitarian and social action through field research and an ethical approach

RC3 LONG NIGHT OF RESEARCH

23 MARCH 2023

3 priority research areas to innovate and find sustainable solutions

1. Access to health and epidemics

Understanding situations and sanitary needs of the populations, taking into account the socio-cultural dimensions in actions relating to access to care, prevention and health systems.

2. Migrations and displacements

Better identifying the origin and sources of migration, strategies and experiences of exiled, as well as the relevance of the humanitarian response. Supporting a renewal of practices around this issue, which has become worldwide.

3. Risks and disasters

Studying the causes of the populations' vulnerability, the relevance of their preparation, their perception of risks and the innovative humanitarian responses tested in the most affected areas.



An ethical approach

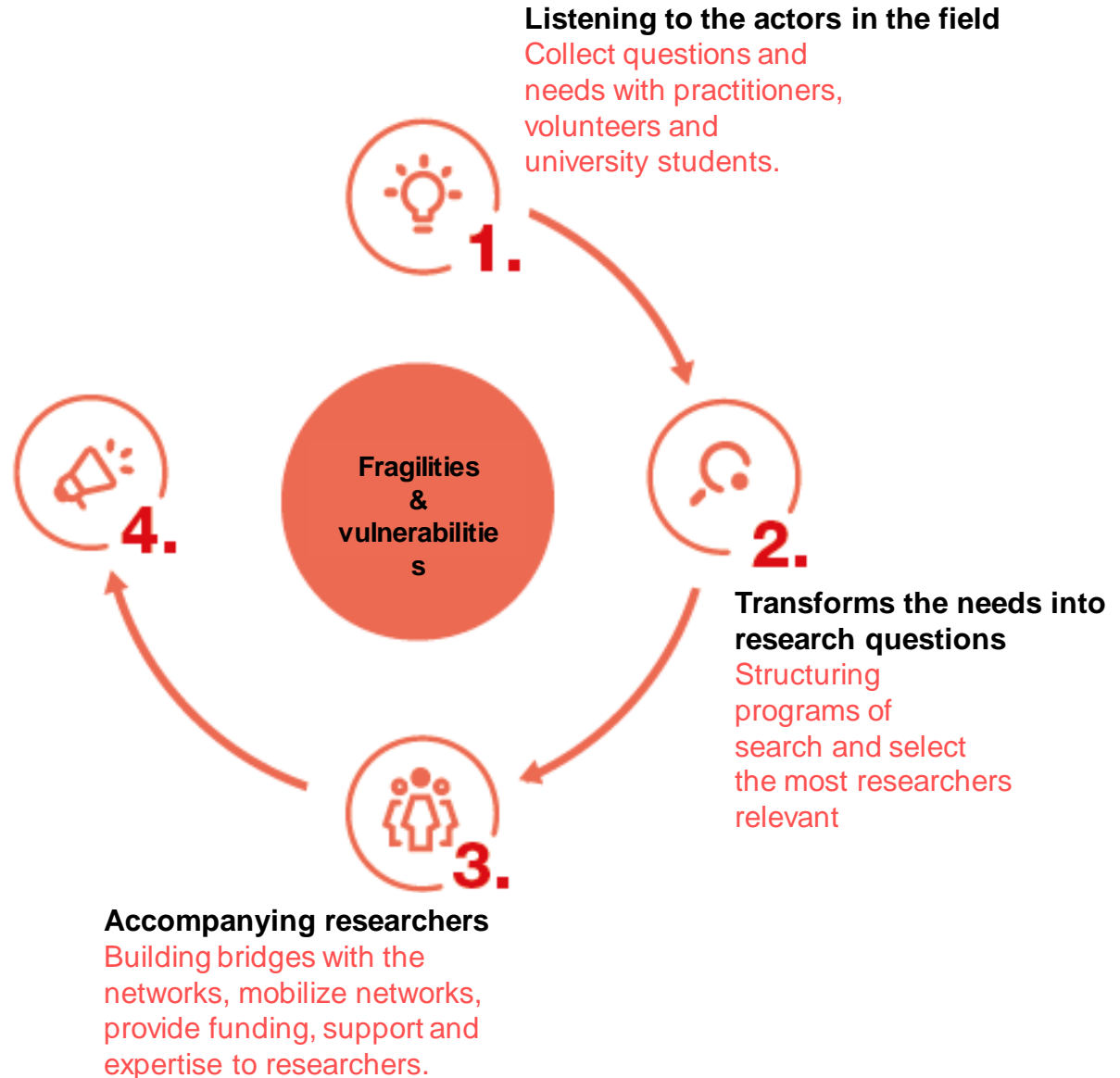
Placing the individual at the centre of the action, understanding what is essential to him/her, respecting his/her dignity.

RC3 LONG NIGHT OF RESEARCH 23 MARCH 2023

Our mission

Disseminate results and contribute to change

Valuing and translating results to raise awareness the academic world, the civil society, decision-makers and citizens.



RC3 LONG NIGHT OF RESEARCH

23 MARCH 2023

1. Engagement as an important axis of research

Volunteering in epidemic context – 10 research projects led by the Foundation based on WHO recommendations for social sciences
New processes for research in time of emergency

Our programs on and with volunteers

2. To Improve connection between volunteers, organizations and research

RCRC Research Consortium (RC3) Flagship researches
a. Volunteering and research – Global Forum 2023
b. Heatwaves / led by IFRC Climate Center and IFRC GDPC

New opportunities
Academic volunteering
Science shops

3. Engagement as a driver of research and change

BENEVO'LAB : a new programme launched by French Red Cross / Foundation
Research needs & questions are driven by volunteers
One year team with a researcher
Recommendations based on a scientific approach

RC3 LONG NIGHT OF RESEARCH
1ST EDITION, 23 & 24 MARCH 2023

“How can research make a difference on
volunteering?”

Social Science in time of emergency: how to adapt?

INTERNATIONAL



FEDERATION



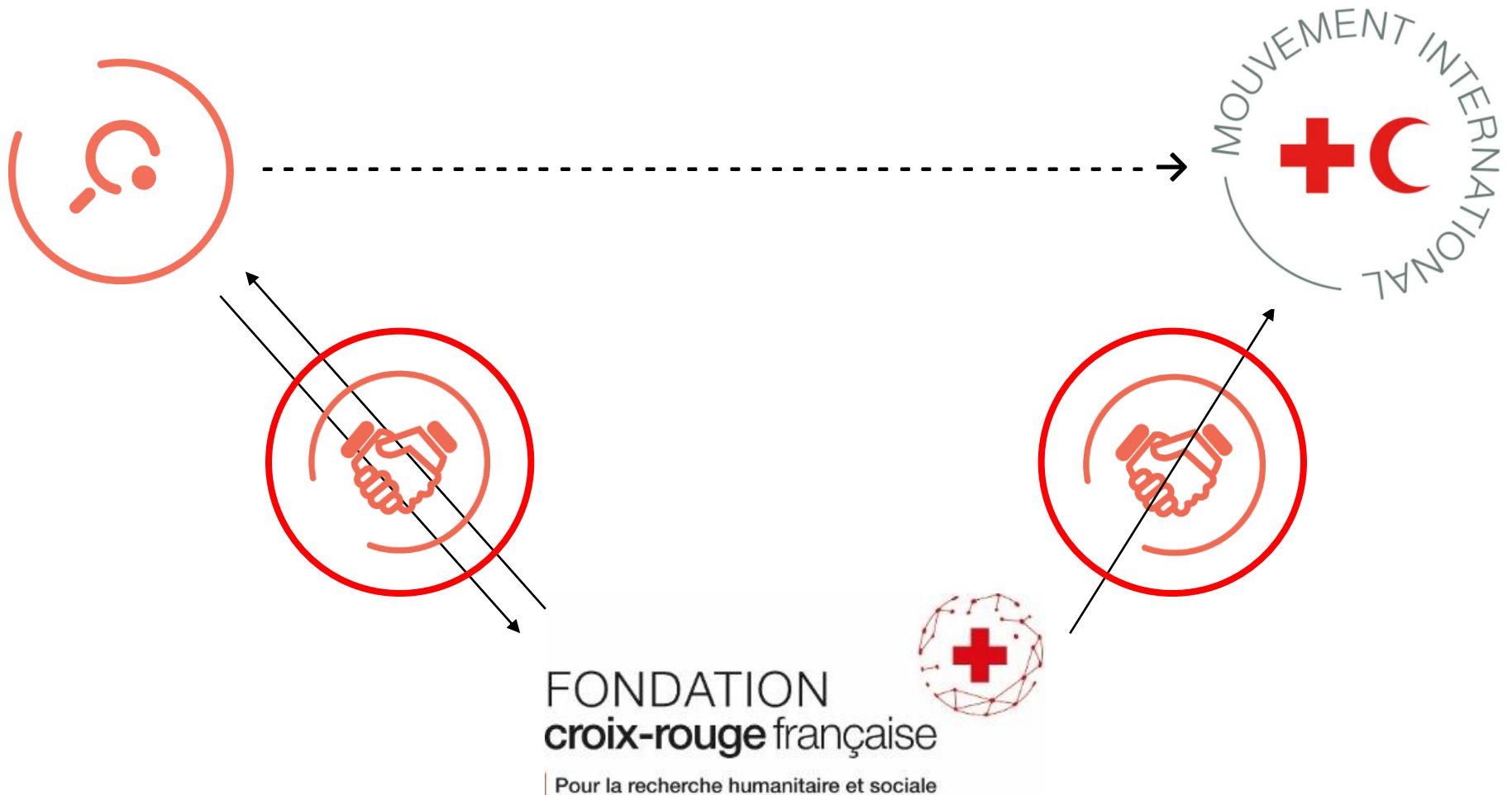
FONDATION
croix-rouge française



| Pour la recherche humanitaire et sociale

RC3 LONG NIGHT OF RESEARCH 23 MARCH 2023

The Foundation, between humanitarian and scientific actors



RC3 LONG NIGHT OF RESEARCH

23 MARCH 2023

The 3 main challenges

Challenges	Objectives	Solutions
Time	Start research as soon as possible	New “flash calls” procedure with new decision-making mode for Governance
Quantity	Support as much research as possible	Solicitation of scientists to undertake research for free (research apart from calls)
		Mobilization of partners and donors
		Prioritization of Covid research by the Foundation team
Quality	Support research useful to operational staff	Focus on a cross-cutting theme
		Consultation of IFRC and French Red Cross teams to understand the field concerns

“Social Science in time of emergency: how to adapt?”
 Vincent Leger, French Red Cross Foundation



RC3 LONG NIGHT OF RESEARCH 23 MARCH 2023

A cross-cutting theme: volunteer action in an epidemic context

International scientific priorities

WHO and Glolid-R network roadmap on research priorities (February 2020, Geneva).

Among the priority questions: *What are relevant, acceptable and feasible approaches to support the physical health and psychosocial needs of those providing care to Covid-19 patients?*



Essential concerns of
the RCRC Movement



Research needs of
the French Red
Cross



Volunteer action in
an epidemic context



RC3 LONG NIGHT OF RESEARCH 23 MARCH 2023

First “flash” calls launched in March and May 2020



“Volunteers in an epidemic context: representations and dynamics around this essential player in the response to Covid-19” (launched twice)

Eligible territories: Metropolitan France and/or the most affected overseas territories

“Covid-19 in Africa: what role for volunteers for resilient action? »

Eligible territories: Burkina Faso, Burundi, Comoros, Ivory Coast, Cameroon, Guinea, Madagascar, Mali (*resident researchers only*), Mauritius, Niger (*resident researchers only*), Senegal

“Fight against Covid-19: what social impact of health measures for the most vulnerable? »

Eligible Territories: Burkina Faso, Burundi, Ivory Coast, Cameroon, Metropolitan and Overseas France, Guinea, Haiti, Madagascar, Mali (*resident researchers only*), Niger (*resident researchers only*), Senegal



World Conference on Humanitarian Studies 2021

3-5 November 2021



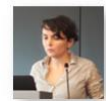
1ère édition L'instant recherche « Le regard des sciences sociales sur les épidémies en Afrique »



Abdoulaye Touré
Directeur général de l'Institut national de santé publique du Guinée



Alexandra Razafindrabo
Docteure en économie



Emilie Mosnier
Docteure en épidémiologie, santé publique et recherche clinique



Olivia Névrissas
Anthropologue, engagée au sein de Médecins du Monde Fr et Handicap International

Partenaire pour et bourses de recherche
Fonds pour la Recherche

Mardi 3 novembre 2020

FONDATION croix-rouge française
Pour la recherche humanitaire et sociale



Fondation Croix-Rouge française Plan d'urgence recherche Covid-19

Présentation des recherches menées avec la Croix-Rouge française sur l'action bénévole en contexte épidémique (2020-2021)

FONDATION croix-rouge française
Pour la recherche humanitaire et sociale

RAEE
Réseau d'anthropologie des épidémies émergentes

Journée scientifiques du Réseau d'anthropologie des épidémies émergentes

Avec le soutien de SonarGlobal

sonar global

Expériences sociales des mesures sanitaires relatives à l'épidémie de covid-19
Jeudi 29 Octobre 2020
Amphithéâtre de sciences naturelles
Aix-Marseille Université, Campus Saint-Charles

Aix-Marseille Université

Sur place (100 max) ou en visioconférence (300 max)
Information et inscription (gratuite mais obligatoire) :
<https://anthropocv.scienceconf.org/>

LPED
Institut de Recherche en Développement
FRANCE

ALTERNATIVES HUMANITAIRES

July 2020 — Issue 14
HUMANITARIAN ALTERNATIVES



FOCUS
COVID-19

Expériences, perceptions et ressources face à l'épidémie de COVID-19 chez les bénévoles de la Croix-Rouge française

FONDATION croix-rouge française
Pour la recherche humanitaire et sociale

Emilie Mosnier¹, Olivia Nevissas²

1. Aix Marseille Université, INSERM, IRD, SESSIM, Sciences Economiques & Sociales de la Santé & Traitement de l'Information Médicale, Marseille, France
2. Prospective Coopération, Marseille, France



Impacts dans le champ humanitaire
Impacts in the humanitarian field

Les Papiers de la Fondation n° 47
Décembre 2022

MAIS EGLEMENT... RESEARCHING Complex environment and systems are fast moving. The link between environment and epidemics	BUT ALSO... TRANSLATING Localisation of 'understandable' impacts of the Covid-19 on the field. An localisation possible impacts of the Covid-19	REASON The impact was never the same? → p. 154 The capital of the view?
--	---	--

Pratiques Humanités

Numéro 6
Septembre 2022

SANTÉ ET ÉPIDÉMIES - COMORES

Quel mal-être chez les volontaires du Croissant-Rouge comorien après le Covid-19 ?

En frappant l'archipel, la pandémie a révélé les aspects socio-économiques et psychologiques douloureux de la condition des bénévoles. Comment les appréhender et y remédier ?

ACTIONS DE SENSIBILISATION ET DE PREVENTION CONTRE LE COVID-19

Arabelle JACCARD, anthropologue française, chercheuse en épidémiologie et épidémiologiste, a travaillé au sein de l'Institut de Recherche et de Santé Publique en France et à l'étranger. Après une mission à Madagascar auprès d'une organisation de la société civile et de l'ONG Aïda, elle rejoint en 2022 l'Institut Croix-Rouge pour mener une mission de recherche et de sensibilisation de la population de l'île de la Grande Comore. Elle est actuellement responsable de la mission de recherche et de sensibilisation de la population de l'île de la Grande Comore.

Les contextes et enjeux humanitaires et sociaux

En lien avec le soutien des institutions locales et nationales, la Croix-Rouge française a pu mener à bien une recherche-action auprès des bénévoles du Croix-Rouge comorien. Cette recherche-action a permis de mieux comprendre les besoins et les attentes des bénévoles, ainsi que les défis de la recherche-action en contexte humanitaire. Cette recherche-action a permis de mieux comprendre les besoins et les attentes des bénévoles, ainsi que les défis de la recherche-action en contexte humanitaire.

Les objectifs de la recherche

A partir de notre hypothèse, notre premier objectif était de mieux comprendre les besoins et les attentes des bénévoles du Croissant-Rouge comorien. Ce premier objectif a été atteint grâce à la mise en place de groupes de discussion et de focus groups. Ces groupes ont permis de mieux comprendre les besoins et les attentes des bénévoles, ainsi que les défis de la recherche-action en contexte humanitaire.

Partenaires de la recherche

Arabelle Jaccard a réalisé cette recherche avec le soutien de la Fondation d'anthropologie Médicale de l'Institut Pasteur (IRAP) de la Croix-Rouge française, et de la Fondation de la Croix-Rouge française. Elle a également bénéficié du soutien de la Fondation de la Croix-Rouge française et de la Fondation de la Croix-Rouge française.

ALTERNATIVES HUMANITAIRES

Nov. 2020 — Issue 15
HUMANITARIAN ALTERNATIVES



FOCUS
COVID-19 (2)

Retours d'expériences et enjeux d'avenir Lessons learned and future challenges

MAIS EGLEMENT... RESEARCHING The history of impunity	BUT ALSO... TRANSLATING Decision-making in humanitarian advocacy	REASON The change within humanitarian practice is slow. The history of impunity Humanitarian photography in line of sight
---	---	---

RC3 LONG NIGHT OF RESEARCH

23 MARCH 2023

Challenges of research in time of emergency

Adapt to operational needs

- | | |
|--|--|
| ● Lack of availability of French Red Cross teams, caught up in the emergency | → delays in communicating field concerns and coordinating research implementation. |
| ● Modified decision-making chains to respond to epidemic priorities | → difficulty finding adequate contacts to facilitate access for researchers to people, data and places. |
| ● Rapid evolution of research needs and questions throughout the health crisis | → difficulty in keeping field concerns up to date and anticipating the next relevant research questions. |

Adapt to the rigid legal and ethical framework for research

- | | |
|---|---|
| ● Issue of the management of Red Cross personal data for research purposes | → delay in making data available for a use that Red Cross lawyers are not used to. |
| ● Complex drafting of research protocols and agreements between the research teams, the French Red Cross teams and the Foundation | → difficulty in formalizing and then integrating all the needs and expectations of researchers and operational staff into a common roadmap. |
| ● Long time for researchers to obtain opinions from Ethics Committees. | → delay in starting research. |

“Social Science in time of emergency: how to adapt?”
 Vincent Leger, French Red Cross Foundation



RC3 LONG NIGHT OF RESEARCH

23 MARCH 2023

Lessons learned

- 1.** Humanitarian and social actors must learn to transmit their research needs to researchers for work and results useful for more effective action.
- 2.** This implies a better understanding on the part of researchers of the institutional constraints weighing on these organizations and of the need to identify common objectives for exploiting the results.
- 3.** Need to support and accompany researchers to obtain funding and to study the fields of intervention of humanitarian and social actors.
- 4.** Defend qualitative and empirical SHS approaches, underrepresented in the research effort.
- 5.** Fight against inequalities in research, by opening funding opportunities to researchers and laboratories from countries in the South.

“Social Science in time of emergency: how to adapt?”
Vincent Leger, French Red Cross Foundation



RC3 LONG NIGHT OF RESEARCH

23 MARCH 2023

Question

What are the main findings of your research on volunteering in epidemic contexts, and how can they be useful to humanitarian organisations? / Quels sont les principaux résultats de vos recherches sur le volontariat en contexte épidémique, et en quoi peuvent-ils être utiles aux organisations humanitaires ?



Dan Ferrand-Bechmann
Sociologist, Professor
Emeritus of the
University of Paris 8



Annabelle Jaccard
Clinical psychologist
and doctor in
psychopathology and
psychoanalysis



Hamed Seddighi
Postdoctoral Researcher,
Clinical Psychology and
Experimental
Psychopathology
Department, University of
Groningen



Khoudia Sow
Medical doctor and
anthropologist, Regional Centre
for Clinical Management and
Training of the Infectious
Diseases, Fann Hospital in
Dakar

RC3 LONG NIGHT OF RESEARCH

23 MARCH 2023

Question

What are the added values and challenges of collaboration between researchers and humanitarian organisations, and what advice would you give to improve this collaboration? / Quels sont les valeurs ajoutées et défis de la collaboration entre chercheurs et organisations humanitaires, et quels conseils donneriez-vous pour améliorer cette collaboration ?



Dan Ferrand-Bechmann
Sociologist, Professor
Emeritus of the
University of Paris 8



Annabelle Jaccard
Clinical psychologist
and doctor in
psychopathology and
psychoanalysis



Hamed Seddighi
Postdoctoral Researcher,
Clinical Psychology and
Experimental
Psychopathology
Department, University of
Groningen



Khoudia Sow
Medical doctor and
anthropologist, Regional Centre
for Clinical Management and
Training of the Infectious
Diseases, Fann Hospital in
Dakar

Contact us

Hamed Seddighi Khavidad

h.seddighi@rug.nl

Khoudia Sow

khoudiasow2@gmail.com

Virginie Troit

virginie.troit@fondation-croix-rouge.fr

Dan Ferrand-Bechmann

dan.ferrandbechmann@gmail.com

Annabelle Jaccard

annabellejaccard@gmail.com

Vincent LEGER

vincent.leger@fondation-croix-rouge.fr



Please give us your assessment on the event

<https://forms.gle/yfSEANTsELLULA1j9>